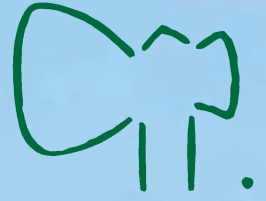




angus **Raff**

2024 Newsletter

angus



59th YEAR OF DEDICATED ANGUS SEEDSTOCK BREEDING FOR THE AUSTRALIAN BEEF INDUSTRY

'Boots on the Ground' Annual Spring Bull Sale, Drillham QLD

FRIDAY 16th AUG 2024

**BRED TO GROW FAST &
WEIGH HEAVY WITH EXTRA
CARCASE WEIGHT,
YIELD AND FEED EFFICIENCY.**

CATTLE THAT ARE PROFITABLE FOR;

- the Cow/Calf Producer
- the Backgrounder
- the Grass Fed Bullock Producer
- the Feedlotter
- the Processor

Measuring all things measurable - including actual in herd carcasses hanging on the hook. Parent Verified, Genomic Tested, Morphology Tested.

GENETICS WITH A DIFFERENCE.

One Hundred Efficient Feed Converters Sell Friday 16th August 2024...

Celebrating our 59th year of dedicated Angus Seedstock breeding for the Australian Beef Industry we will again be holding our annual bull sale at Drillham, Queensland on Friday 16th August.

Understanding the importance of balancing all things 'measured' with 'on ground breed character and raw performance' we continue to name this year's sale the 'Boots on the Ground Annual Spring Bull Sale'.

We strongly encourage and welcome everyone to personally inspect our draft of bulls to give opportunity to not only eyeball our offering but to allow for a little more insight into our pedigree, performance, and general breeding direction that our herd has evolved to become.

Since establishment in 1965 we have had a clear breeding direction – that is to maintain all the wonderful natural qualities of an Angus animal including calving ease, their exceptional maternal and carcass qualities, along with their ability to forage and survive in a wide range of environments. However, our genetics must also excel for weight for age, carcass weight and yield. Feed conversion is also important. We aim to produce cattle that can eat less feed per day relative to their individual weight and rate of weight gain. These key selection preferences continue to make our herd genetically unique.

"With the entire industry's goal towards Carbon Neutrality by 2030 and moderating methane, efficiency of our production system becomes increasingly important. An efficient animal that takes less days on feed and produces a heavy carcass weight must obviously produce less methane."

Of the 100 bulls selling there will be three groups.

Several used stud sires will lead the sale. These were used on both cows and heifers. One of these, Raff Thumper T285, contains within his pedigree Hoff import genetic sires Raff Distinction, Raff Ego, Raff Explosive and our most acclaimed show and unique breeding sire Raff Empire E269 – Raff Thumper T285 will impress all...

Following lots are 45 spring born 22 month old bulls. Within this group are the first sons of our new high performance AI sire EG Eyes Onyou. His sons are exceptional showing docility, great skin types, extra carcass quality and extreme muscle within a compact yet heavy body mass and strong bone type.

One such son, Raff Tycoon T356, at 400 days weighed 628kg to be gaining 1.42kg/day (grass only), had a frame score of 7 with a scrotal measurement of 43cm. Not only was he a top performer for these traits but he also excelled for carcass scanning with even fats 6/6mm, a massive EMA of 104sq cm and a very high IMF% scan of 6.9% - all at 400 days of age.

He is a twin, with his retained brother having already been used with semen in the tank. Tycoon's dam, now a donor, is sired by Raff Dazzler D353 (full brother to Hoff import and the 2012 Brisbane Royal Show Interbreed Champion cow Raff Blackbird D349). Tycoons maternal grandam is sired by another Hoff import sire Raff Dakota D85 (a $\frac{3}{4}$ brother to Hoff Limited Edition SC594). One more generation back and a full sister to one of the most popular and successful Australian bred AI sires of his time, Raff Midland Z204 emerges. Just magnificent...

Within the 50 autumn born 18 month old bulls there is a diverse genetic mix including the first sons of another high performance AI sire Ellingson Three Rivers.

He is a powerful bull with extra length and back end shape that maintains frame size. One IVF son, from Hoff Blackbird E267 / O'Neill's Expedition import cow, recorded a 114 sq cm EMA at just 16 months. A full brother to him has been retained. There are also two ET brothers by Ardrossan Equator A241 out of a full sister to this Blackbird cow – one of these bulls is a magnificent deep bodied and docile sire.

- **Morphology Tested** – Breeding Soundness Examined by Ced Wise AB Services.
- **Fully Performance Recorded** – Calving ease scored. Weighed 200, 400 & 600 days. Measured for scrotal size & frame score. Ultrasound scanned for carcass – EMA, IMF% & Rib/Rump fat. TransTasman Angus Cattle Evaluated – TACE.
- **Genomic Tested** – HD50K - 21 traits.
- **Vaccinated** – Tick Fever, 3 Day Sickness, Vibrio, Pestiguard, Ultravac 7in1, Bovilus MH+IBR.
- **Parent Verified** – complete herd.
- **Pesti Virus** – tested free & double vaccinated.

Raw Data including Weights, Whole of life ADG, Docility Score, Frame and Scrotal size and Ultrasound Scanning data will be detailed within sale catalogue.

Updated weights available on sale day.

Individual Lot Videos and photos will be available 1st August.

Selling Agents GDL – Mark Duthie 0448 016 950

Sale will be interfaced with AuctionsPlus.

www.raffangus.com.au #raffangus

The home of Raff Angus is Queensland for sourcing Seedstock Breeding Bulls. Whilst we have moved south, Raff Angus gives absolute assurance to our northern clients that we are totally committed to holding an annual auction sale for our bulls in Queensland.

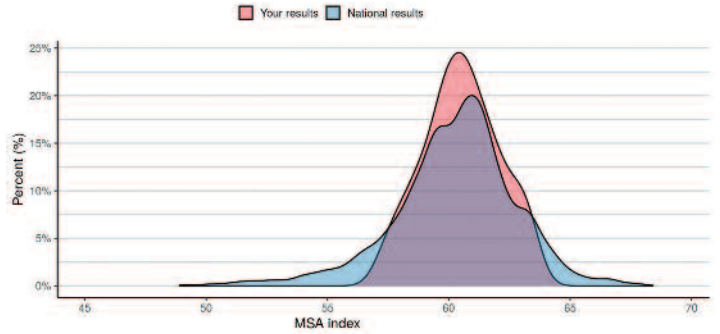


Grass Fed Steers weigh heavy – commercially relevant...

In late January we sent 110 steers off King Island across to Greenham at Smithton, Tasmania for processing. These were the complete draft, bottom 50% of male calves born, of both Spring (Sept/October 2021) and Autumn (Feb/March 2022) born steers.

100% pasture raised and on farm fattened these animals had not received any grain, silage, or hay supplements since weaning.

Meat & Livestock Australia myMSA Dashboard – direct comparison. – steers processed 30 th January 2024			
	Raff Angus	Vic/Tas/SA	National
Total head	110	2474	4459
MSA Index	60.52	60.50	60.25
Carcase Weight	348kg	319kg	304kg
Ossification Score	170	170	165



Our Raff Angus steers yielded a 40 kilogram heavier carcase when compared Nationally to all steers processed and graded through MSA on that day.

With the grid price of \$5.40/kg it equated to a \$216/head income increase. For this consignment it added an extra \$23,760 in value.

Over the past 4 years we have sold 670 prime yearling milk tooth grass finished steers and heifers. Compared nationally within the Meat & Livestock myMSA dashboard they have netted \$365/head more value to gross an extra \$244,960 over the past 4 years.



Calving ease – the truth...

We, like every common-sense and practical cattle breeder, refuse to accept calving difficulty within our herd and, in our case as a supplier of seedstock genetics, in the herds of others.

However, Raff Angus will not participate in the current direction of using low birth weight EBV genetics. Small to small has a natural diminishing effect. It has a diminishing effect of that animal's ability to not only grow and add weight but also on its skeletal shape and bone mass. The resulting daughters from a low birth weight bull will generally need joining sires of similar or even lower birth weights because of such an inherent natural diminishing effect. Heifers should be challenged. We use heifer bulls - not from a birth weight EBV but on a visual phenotype and pedigree selection. Industry can well access and note that, by scientific estimated breeding values (EBV's), Raff Angus are reported unfavourably for calving ease and birth weight traits. However, here are some historical in herd facts that totally contradict science. In 2023 we calved down 666 calves, all of which were recorded for Calving Ease. 2% or 14 females were assisted. Of these five were easy assists (score 2) as in 'not sure how long she has been going for so best get her in just in case'. Nine, or 1.35%, of the 666 heifers and cows that we calved down in 2023 needed assistance. This truly flies in the face of science. Further, we have been told by well-regarded EBV industry influencers that, because of our genetics, the lack of linkage to the reference population and our enhanced selection for weight

for age, carcass weight and yield, science tells us we should be assisting 20% of our herd. The 2% we assisted for the 2023 year is not enough for the system to believe so, unless we tell lies to make science believe such, all raw/real data is ignored and our whole herd is negatively and inaccurately reported for such calving traits.

We share this information for one reason. Industry can too easily stay at home and discredit herds such as ours, and others, doing pre-sale preference EBV sorts with little or no true understanding of individual programs and such reporting inaccuracies through science.

Our herd is not stand alone. There are numerous breeders that are reported similarly. The integrity of the seedstock producer, particularly in this instance, is far more important and accurate than any mid parent scientific assumption.





angus **Raff** angus



The below ultrasound scanning data is of the **SPRING** born sale bull group. These sell 16th August.
 These were measured by Roger Evans on 20th November 2023. The bulls age at this time of below data collection was around 13 months – these results cannot be compared against the ‘U’ Autumn bull group.

Tag Ident	Weight Kg	ADG - Whole of Life	Frame Score	Scrotal cm.	EMA Sq cm.	P8 Fat mm.	Rib Fat mm.	IMF %
T348	524	1.16	5.6	38	89	6	6	5.7
T354	588	1.32	7.4	39	91	4	4	5.3
T355	580	1.31	6.0	39	90	6	4	6.4
T356	628	1.42	7.0	43	104	6	6	6.9
T358	560	1.26	5.4	43	95	8	5	6.3
T366	586	1.32	7.4	39	92	4	3	4.9
T367	638	1.45	6.8	34	92	5	4	5.1
T369	580	1.31	7.0	40	95	7	6	6.2
T370	608	1.38	6.0	41	101	6	5	6.3
T373	606	1.38	6.2	31	103	9	6	6.6
T375	566	1.29	5.3	41	92	7	6	5.6
T376	612	1.40	6.7	40	90	5	4	5.5
T378	610	1.39	5.9	41	98	8	6	6.3
T383	624	1.43	7.5	41	105	4	4	4.8
T389	570	1.30	6.5	38	97	6	4	5.9
T390	540	1.23	6.1	41	90	5	4	6.4
T392	582	1.33	6.3	41	91	6	4	5.9
T398	554	1.27	6.1	38	91	7	5	6.1
T399	602	1.39	6.1	34	103	6	5	5.3
T400	528	1.21	6.0	38	86	4	4	5.1
T411	554	1.28	5.2	39	91	9	6	6.4
T423	570	1.32	7.1	37	94	5	3	5.2
T427	624	1.46	6.4	37	95	6	5	6.2
T428	596	1.39	6.4	42	93	9	6	6.1
T430	538	1.25	6.6	41	84	4	3	4.7
T433	524	1.21	6.2	37	91	4	4	5.5
T434	576	1.34	6.4	41	97	6	4	5.2
T437	634	1.49	7.0	42	100	8	5	5.9
T441	568	1.33	6.0	40	88	7	6	5.9
T447	510	1.19	6.0	35	88	6	4	5.7
T451	608	1.43	6.8	40	97	6	6	7.0
T453	530	1.24	6.6	39	94	5	4	5.3
T456	552	1.30	6.8	39	94	4	4	5.3
T457	596	1.41	6.8	37	102	8	5	6.0
T467	504	1.18	6.0	38	87	8	5	5.7
T468	578	1.37	6.4	38	93	6	5	5.9
T479	542	1.29	6.9	37	87	5	5	5.8
T481	534	1.27	6.1	38	89	6	5	6.2
T493	520	1.24	5.5	38	90	5	5	6.5
T495	526	1.26	6.3	38	89	5	4	6.3
T504	506	1.21	6.1	33	92	4	3	4.6
T505	544	1.32	6.3	36	91	6	4	5.7
T506	586	1.42	6.6	39	94	4	4	5.0
T513	576	1.40	6.8	40	93	5	3	6.1
T514	580	1.42	7.4	35	88	4	3	5.5
T516	489	1.18	6.2	35	85	6	5	5.6
T520	510	1.25	6.0	38	87	6	4	5.7

“A number of our sale lots are reported favourably for NFI-F indicating they are expected to eat less feed per day relative to his weight and rate of weight gain.”

The below ultrasound scanning data is of the **AUTUMN** born sale bull group. These sell **16th August**. These were measured by David Reid on 21st June 2024. The bulls age at this time was around 16 months. These bulls were run in a different contemporary group to the 'T' bulls – their data cannot be compared against these Spring 'T' bulls.

Tag Ident	Weight kg.	ADG - Whole of Life	Frame Score	Scrotal cm.	EMA Sq cm.	P8 Fat mm.	Rib Fat mm.	IMF %
U4	560	1.03	5.5	37	94	11	8	6.8
U22	680	1.27	6.5	38	108	8	5	6.7
U23	660	1.23	6.5	34	102	10	7	6.3
U25	590	1.10	7.0	38	90	10	7	7.1
U48	550	1.03	5.5	33	87	8	6	5.7
U73	610	1.15	5.3	35	100	9	6	6.5
U76	630	1.19	6.0	41	87	10	8	6.6
U86	600	1.13	6.5	36	84	8	5	4.6
U88	550	1.02	5.3	35	86	11	8	6.8
U91	590	1.11	5.8	35	98	8	6	4.8
U94	615	1.16	6.1	38	94	8	5	5.8
U95	600	1.13	6.6	36	96	9	5	6.5
U97	630	1.19	5.8	37	93	12	10	6.5
U103	730	1.39	6.8	40	110	8	7	5.6
U120	590	1.12	5.9	39	92	9	6	6.3
U121	630	1.20	7.1	34	84	6	4	4.8
U122	660	1.26	6.1	37	97	9	7	5.5
U124	630	1.20	7.4	37	106	7	5	4.8
U127	640	1.22	7.1	39	101	6	4	5.5
U128	650	1.24	7.6	38	107	10	6	5.7
U146	580	1.10	6.6	39	90	10	6	5.8
U148	600	1.14	6.1	35	93	8	6	5.3
U155	620	1.18	7.4	38	104	8	6	6.8
U157	620	1.18	6.4	36	84	8	6	6.6
U161	660	1.27	6.6	36	96	10	6	5.5
U167	620	1.19	5.6	36	103	11	7	5.8
U170	670	1.29	7.1	36	110	6	4	6.5
U186	630	1.21	7.1	38	112	8	7	5.6
U190	630	1.21	6.4	35	105	10	9	5.0
U201	560	1.07	6.6	35	95	10	6	6.2
U202	615	1.18	6.6	36	91	10	7	6.3
U203	670	1.29	6.4	40	104	6	5	5.7
U205	590	1.13	5.4	39	106	7	6	6.2
U219	640	1.24	6.4	39	110	7	5	5.7
U225	650	1.26	5.2	34	100	11	9	7.0
U227	670	1.30	7.2	36	95	10	10	7.0
U234	570	1.09	6.4	35	78	9	6	6.2
U236	540	1.03	6.4	36	81	7	5	6.6
U241	590	1.14	5.7	38	87	6	5	5.2
U247	660	1.28	7.0	38	98	10	7	7.2
U269	670	1.31	7.4	39	88	6	5	5.7
U270	610	1.18	5.7	39	92	9	6	5.5
U271	650	1.27	6.4	33	94	10	8	5.8
U274	570	1.10	6.2	34	96	10	8	5.6
U281	590	1.15	7.7	38	78	9	6	6.3
U282	650	1.26	7.2	35	105	11	8	6.7
U312	650	1.26	7.2	37	107	9	7	6.6
U323	680	1.33	6.7	39	114	6	5	5.7
U345	590	1.16	6.5	35	105	10	7	6.5
U350	580	1.15	6.5	33	102	8	6	5.5
U352	600	1.19	7.0	34	98	6	5	5.3
U361	610	1.21	6.8	36	103	7	6	5.5
U362	550	1.09	5.5	39	93	11	7	6.4
U366	620	1.24	6.8	34	80	6	5	6.3
U367	600	1.20	7.0	36	77	6	5	6.7
U381	600	1.21	7.8	38	88	10	7	6.4
U398	610	1.24	6.9	36	82	8	5	6.4
U399	610	1.24	6.6	31	90	8	5	5.5

Driest period on King Island in 145 years – but it is still okay...

Even when moving into what must be considered one of the most reliable grass growing environments in Australia, we have not completely escaped the ever changing rainfall patterns of the world. Starting from last spring, King Island has broken all records with rainfall totals drastically reduced as weather fronts continued to either stay in the north or slip between the Island and Tasmania mainland. These past seasons have been the worst for over 14 decades. Thankfully, from our northern experiences of past dry events, this one has been manageable for us. However, some extra water infrastructure had to be

added, empty dams pushed in, grazing rotations tightened, and the selling of livestock had to break away from traditional selling paths. For us it has meant that both steers and heifers were sold early, instead of prime grass finished animals later this year, they were sold as feeder cattle into NSW feedlots. Whilst it has seen per head dollar values significantly reduced it will allow us to gain insight on how our genetics perform in a feedlot environment. One hundred and fifty steers and heifers, all pedigree and performance recorded, are now in NSW on feed. We look forward to analysing their raw performance data.

Our Family – we should have had more...

Anna and I are very proud of our family however another year has passed and soon our children will be 'on their own'...

Harry is now studying Business Management at University of Queensland, Brisbane. I asked him how studies were going, and he simply commented, 'don't worry dad, I enjoy college life too much so I'm not going to fail' Apparently one of the rules on campus is that you must pass to stay within!! Harry continues with his unwavering ambition to be a professional rugby player. He moved to Souths this year and has made Colts 1. For a person who has had limited access to quality rugby, particularly when in the south, it is a credit to him. He recently benched for Premier Grade 1 amongst Queensland Reds players. Recent commentary noted that he had 'high rugby IQ' among other things so our eldest son is pursuing his ambitions with absolute enthusiasm and enjoyment.

Charlie completed year 12 last year. He intends to start a Building Apprenticeship next year. We have enjoyed having him work with us on farm for the first half of the year. We calved down 500 cows Feb/March so extra hands on deck were well appreciated. Charlie's attention to detail, enthusiasm and genuine interest in life will open many doors for him. He was recently presented with the opportunity to undertake an investigation into international production systems following his recent announcement as the 2024 Trans-Tasman Exchange recipient. Through the Trans-Tasman Exchange Charlie will travel around New Zealand touring their beef industry. He intends to stay over for at least three months to give maximum exposure to differing production systems and to build on his knowledge and skills as a producer, expand his network internationally and further his professional and personal development. A wonderful opportunity.

Georgina is now in her senior years of school working her way through two year twelve subjects whilst in grade 11. The workload demand is intense however her results are amazing. Understanding genetics and the heritability percentages it is a relief that my wife's dominant academic gene was expressed as Georgina truly excels academically!! She plays Netball and AFL for these winter months and as with most girls of her age occasionally finds herself completely exhausted by the end of each week – especially when her social calendar is considered!! Olivia moved up in middle school starting grade 7 this year. As with Georgina she is a day student during term in Adelaide and a farm girl at home during holidays. We all know the last child within a large family grows up to be the toughest, though her siblings would disagree. Olivia aims to beat her sister's grades and plays hard during Hockey and AFL – both school and club. She is one determined little lass being noticed for such and plays Open A for hockey, as a grade 7, and middle A for Footy.

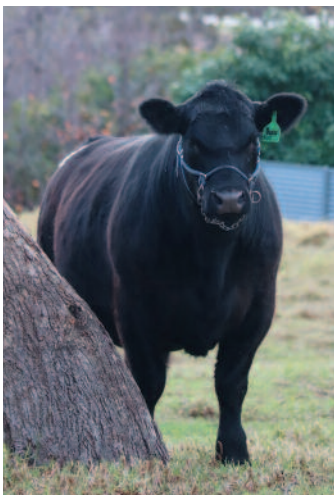


Supporting Ag in schools...

With Anna living in Adelaide during school terms, our two daughters Georgina and Olivia have been attending Scotch College for their secondary education. Within the 20 hectares of the College grounds lies a fully functioning agricultural farm. On such are several paddocks, yard & shed facilities where cattle can be fed, weighed, and broken in for showing. Last year we supported this section with two of our Raff Angus steers making the trip across Bass Strait earlier in the year in preparation for the Adelaide Royal Show last September. Those managing the steers did a wonderful job in feeding and preparing our steers 'TinTin & Turbo' with students hands on at all stages throughout.



Of the 215 steers exhibited at the Royal Adelaide Show Led Steer Section the Scotch College teachers, staff and students did such a good job on our steers that they were rewarded with...



🏆 *Second Place (by just 0.02% of a point) for Best Export Eating Quality Carcase*

🌟 *Highest Scoring MSA Marble Index Steer in the competition - 670*

🌟 *Heaviest Carcase Weight Steer in the competition - 420.2kg Carcase Weight at 18 1/2 months - (25% of steers had same or higher Ossification scores)*

🌟 *Equal Highest MSA Marble Score Steer in the competition - Marble Score 4*

🌟 *2nd Highest MSA Index Steer in the Competition - 67.56*

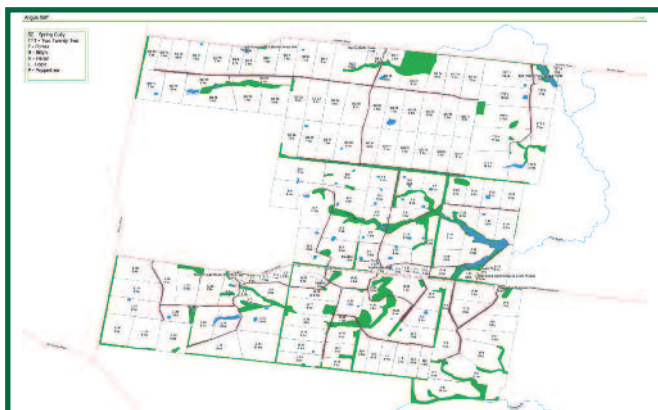
🌟 *3rd Highest Yielding Steer in the Purebred Export 330.1kg & greater HSCW class - Yielding 61.97%*

🌟 *7th Highest Yielding Steer even when compared against the Crossbred Export & School Export 330.1kg & greater HSCW classes - (57 exhibits in total).*

Of note 27 Purebred Angus Steers were exhibited with a Carcase Yield average of 56.69%. Our two steers average 61.30% - equating to an extra 4.6% Carcase Yield.

The Farm - understanding our plan...

It is nearing our ninth year since we moved south in the quest for green grass and reliable production. Over the years our family have been fortunate to acquire some neighbouring land allowing for a 1052 hectare single aggregation area of freehold land to have been accumulated. With the help of a legendary team of fencing contractors from Queensland we have now completed almost all the required fencing. New waters, pipe, and cement troughs have also been installed with the farm now well mapped and well recorded. All but three of the 162 grazing paddocks can be accessed via the 19.73 kilometres of laneways - we were lucky with access to gravel dug direct from our farm. There are 153 water troughs of which all are supplied by water from three bores or from a large dam that gravity feeds to the watering points. Thanks to the network of laneways, we direct almost all cattle work to a main set of yards we built over old dairy infrastructure and under a terrific shed. We only have 9% of our farm fenced off as remnant vegetation & waterways. The importance of shelter belts is immense, so part of our future plan is to plant another six kilometres of native trees and shrub belts, 4500 tube stock, along boundaries - double fenced and wallaby proof.



Moving forward we hope to one day acquire some additional acreage on mainland, preferably close to the New South Wales and Victorian border. Since our move onto an island located in the middle of one of the roughest water crossings in the world, only accessible by plane (sounds enticing!!), we have limited

the access opportunities to customers wanting to view our stud or acquire our genetics. Such a mainland block will act as a half way home for our bulls that are destined for our annual Queensland sale. This will allow them to be trucked or, in our case, shipped off Island earlier, at weaning, which in turn will ease some client's mindsets about acclimatisation concerns. Secondly such a farm will allow stud females destined for sale to be homed in a central location.

All females are Herd Book Registered, Genomically Tested and Parent Verified. Annually we will have to sell some 350 females when full production sets itself. To offset such numbers, stud female sales will become an integral part of our business model. We may be a year or three from such, however we have a plan, and it is something we are excited by.

2024 RNA Paddock to Palate - first time we have ever entered a Feedlot Competition...

1977 was the last time we entered a pen of steers into a competition, however, these were oats crop prepared and entered the Brisbane Royal Show Commercial Competition where they received first place. We have always respected those who present their genetics, particularly seedstock producers, into public competitions where the 'good or bad' results are available for the public to openly scrutinize.

This year we entered a pen of steers into Australia's most commercially relevant beef supply chain competition incorporating Feedlot Weight Gain, Carcase Competition and MSA Eating Quality – the 2024 RNA Paddock to Palate Competition. Early March, when just 13 months of age, seven autumn 2023 born steers were selected from a group and headed north to Queensland's Prime City Beef Feedlot. They started their 100 day feed term with an entry average live weight of 420kg.

Mid-June we attended the RNA Paddock to Palate Weight Gain Awards Presentation where we were humbled to receive such outstanding competition results within the below classes –

100 DAY HGP FREE EXPORT CLASS

Champion Individual Weight Gain Steer – 2.79kg/day

With 196 exhibits representing all major breeds this Champion Raff Angus Steer weighed 723kgs at just 16 ½ months.

2nd Place PEN OF SIX WEIGHT GAIN – 2.47kg/day.

This pen had a group average live weight of 662kgs at just 16 ½ months and competed against 28 pen groups within their class.



Sons sell Friday 16th August 2024...

Raff Pedro P163

Sire of the CHAMPION Paddock to Palate Weight Gain Steer - 2.79kg/day



His three sons within our group of seven steers that competed within the RNA Paddock to Palate Feedlot Competition averaged a Marble Score 2, Weighed 676kg and gained 2.50kg/day after 100 days on feed - all at just over 16 months of age.

Twelve brothers to these high performance steers sell Friday August 16th.

We personally imported both Pedros sire and dam from the USA.

His sire, Raff Danny Boy D207, resulted from an embryo following the purchase of Hoff Moriah 822 when Anna and I traveled to South Dakota in 2006 and selected four females from the famous Hoff Scotch Cap Dispersion Sale. His dam, Raff Royal Lady K127, was imported as an embryo following inspection of his sire and maternal cow family from the famous O'Neill's Angus Herd in Iowa.

A Maternal Powerhouse - good cows breed great bulls...



O'Neills Royal Lady 10



O'Neills Royal Lady 28



O'Neills Royal Lady 40



O'Neills Diela 715



Genetic Advancement – upwards and onwards...

The Angus Breed has at last moved away from a core group of inter-related elite EBV animals. For many decades we struggled finding and using many top EBV percentile bulls for varied reasons. We are aware of the industry's direction and increased preference, right or wrong, of sourcing genetics that are reported favourably on paper by science. Whilst difficult in the past we can now, at last, find some leading EBV performance sires that suit our breeding principals. These can be blended into our breeding herd to improve the balance on some key traits that, currently, we are reported less favourably on.

If we introduce, blend, and then go back to our well proven genetic base, we anticipate with time for our herd to reach a new performance level which will, in turn, attract a new audience and clientele base whilst supporting our existing. Part of the art of breeding cattle is patience – something within our industry we need plenty of when compared to the genetic rate of gain achieved through the pork and poultry industries.

Over this past six month period we have artificially inseminated near 400 cows and heifers along with implanting 150 embryos from our elite in herd high maternal cows. The genetic improvement these bulls will introduce will really boost our data and is something we are excited for and interested to see.



Contemporary Groups – does big mean better...

The reliable seasonal environment that King Island offers, and our intense grazing systems allow for animals born over a similar period to remain as one mob with much more ease than when at Drillham. Through calving, joining and over winter we run mobs in cow age drafts – all of which graze identical pastures at same stocking rates. In spring we increase mob sizes boxing cows with heifer calves into bigger mobs and the same for steer and bull calf groups. From weaning such groups are run as one through to 600 days almost in its entirety. The benefit of such large contemporary groups is that each animal's individual genetic capability is pressured and tested. Not only through growth and weight but, as we are certified organic, such intensity puts pressure on their immune system. Over the years animals with compromised immune systems fall away and become obvious culls. We are still managing both spring and autumn calving groups but within another two years we will have 350 odd heifers running in one group – all of which should be born over an eight week calving interval. This will be raw data analysis at its best. Unfortunately, the bulls lose their

inferior brothers at 200 days and earlier when they become steers. This does affect the 'elite bulls' as their raw data cannot be compared against the inferior to widen the performance paper gap however it's too difficult to negate. Hopefully when we improve our genetic relationship to mainstream the scientific systems will pick them out. The obvious negative to big contemporary groups is management. The pressure on pasture and waters is intense with little room for error. Such can easily see real performance compromised through system failings – not through the animal's failings from genetic variances.





Angus Youth Roundup – supporting the future...

It is well known that opportunities for youth in agriculture generally occur from generous donations and in-kind support within our industry. The Angus Youth division of Angus Australia is currently one

of the largest and most active breed youth groups in the country. This is an event that encourages, promotes, and provides a learning platform for anyone aged between 8 and 25 years of age interested in the Australian beef cattle industry. Over many years and even generations we have participated or been involved in the Angus Youth National Roundup. Like many, we have supplied heifers, been actively involved in the running of the event, sponsored, and even officiated at such. Heifers have also been supplied to us for our children. The 2025 Roundup event is planned for 8th to the 12th of January 2025 in Tamworth, NSW.

across to King Island to explore its amazing coast lines, highly productive paddocks, or to play golf on a course ranked within the top 25 in the world or a visit to simply relax and eat the Islands famous cheese. If one of the boys are about when you visit, then you may even get a fresh Crayfish for dinner!!

Keep an eye out later in the year for further information...
#angusyouthaustralia #raffangus

For bookings... www.raffangus.com.au – Farmstay



As a fundraiser we will be offering an accommodation package within one of our fully renovated soldier settlers Farmstay Houses. It will be offered during the post dinner live auction. The package will be for three nights' accommodation within our Peppertree Farmstay House. This dwelling can accommodate six guests, 3 bedrooms, and will certainly include a farm tour. We are excited to offer such and hope this entices a group to come



Texel Sheep – everyone needs a hobby...

With no dingos, no foxes or even a Tassie Tiger King Island is a very safe and easy environment to run sheep. At its peak the Island was running over 100,000 however today there would be less than 10,000 sheep with a shift towards beef production. We had a Southdown Stud for several decades prior to the 90's when, in 1994, at the first genetic sale of Pure Texels in Australia we purchased a ram. Texel Sheep originated on the Isle of Texel off the coast of the Netherlands early in the 19th century with the breed now most popular throughout Europe where they are

utilized as a terminal sire. This breed well suits this environment here producing heavy and high yielding carcasses of outstanding eating quality. We now have a flock of one hundred ewes, selling a few rams and supply boxed lambs to locals throughout the summer season.



2024 RNA PADDOCK TO PALATE COMPETITION

Recognised as one of the worlds more commercially relevant competitions.

100 DAY HGP FREE EXPORT CLASS - Weight Gain Results...



With 196 exhibits representing all major breeds this Champion Raff Angus Steer weighed 723kgs at just 16 ½ months.

His Carcase was a **Marble Score 3** - final results available following the RNA Awards and Beef Industry Dinner August 8th.



This pen had a group average live weight of 662kgs at just 16 ½ months and competed against 28 pen groups within their class.

Early Carcase results revealed two steers recorded **Marble Score 3**, one steer a Marble Score 2 & three steers Marble Score 1 - at 16 ½ months.



Raff Angus Genetics - Profitable for all sectors of the Industry...

The Cow/calf Producer • The Backgrounder • The Grass Fed Bullock Producer • The Feedlotter • The Processor

Marketing – who still wants a hard copy...

This year we have sent this newsletter to all clients past and present and members within Angus Australia. This newsletter publication is an important opportunity to promote our bull sale and share the past years goings on. It is something that we will publish annually. However, when it comes to bull sale catalogues it is difficult to know how many to print and which clientele are interested in receiving a hard copy. Whilst we understand the importance of servicing our clients these are very expensive to print and post, and often, with the access to internet based platforms, are not required.

For this year we will be sending catalogues only to those that request one.

If you would like a physical copy or want to be removed from all mailouts, please complete the below and email to us andrew@raffangus.com.au or take a photo and send to myself on 0429 691 975.

If you would like to reply by post, then please send to - Raff Angus, 12 Boskenna Avenue, Norwood SA 5067.

**Raff Angus Annual Bull Sale selling at 1pm Friday 16th August 2024.
641 Moores-Bice Road, Drillham Queensland 4424.**

Yes, post me a catalogue -

.....
.....

Please remove me from all mailouts -

.....
.....